

Tree House

R Hardman

Allegretto

Clarinet in B \flat

Musical notation for Clarinet in B \flat , measures 1-6. The staff is in 3/4 time with a key signature of three flats. Measures 1-5 contain whole rests. In measure 6, there is a half note G \flat (written as F) and a quarter note F \flat (written as E \flat), both marked *mf*.

Allegretto

Piano

Musical notation for Piano, measures 1-6. The staff is in 3/4 time with a key signature of three flats. Measures 1-5: Treble clef has a half note G \flat (F) and a quarter note F \flat (E \flat), marked *mf*. Bass clef has a half note G \flat (F) and a quarter note F \flat (E \flat). Measure 6: Treble clef has a half note G \flat (F) and a quarter note F \flat (E \flat), marked *mp*. Bass clef has a half note G \flat (F) and a quarter note F \flat (E \flat). A crescendo hairpin is shown between measures 5 and 6.

6

Cl.

Musical notation for Clarinet, measures 6-10. The staff is in 3/4 time with a key signature of three flats. Measure 6: Half note G \flat (F), quarter note F \flat (E \flat). Measure 7: Half note G \flat (F), quarter note F \flat (E \flat). Measure 8: Half note G \flat (F), quarter note F \flat (E \flat). Measure 9: Half note G \flat (F), quarter note F \flat (E \flat). Measure 10: Half note G \flat (F), quarter note F \flat (E \flat). A crescendo hairpin is shown between measures 9 and 10.

Pno.

Musical notation for Piano, measures 6-10. The staff is in 3/4 time with a key signature of three flats. Measure 6: Treble clef has a half note G \flat (F) and a quarter note F \flat (E \flat). Bass clef has a half note G \flat (F) and a quarter note F \flat (E \flat). Measure 7: Treble clef has a half note G \flat (F) and a quarter note F \flat (E \flat). Bass clef has a half note G \flat (F) and a quarter note F \flat (E \flat). Measure 8: Treble clef has a half note G \flat (F) and a quarter note F \flat (E \flat). Bass clef has a half note G \flat (F) and a quarter note F \flat (E \flat). Measure 9: Treble clef has a half note G \flat (F) and a quarter note F \flat (E \flat). Bass clef has a half note G \flat (F) and a quarter note F \flat (E \flat). Measure 10: Treble clef has a half note G \flat (F) and a quarter note F \flat (E \flat). Bass clef has a half note G \flat (F) and a quarter note F \flat (E \flat). A crescendo hairpin is shown between measures 9 and 10.

11

Cl.

Pno.

mp

p

Measures 11-15. Clarinet (Cl.) and Piano (Pno.) parts. Measure 11 has a comma above the staff. Dynamics include *mp* and *p*.

16

Cl.

Pno.

p

Measures 16-21. Clarinet (Cl.) and Piano (Pno.) parts. Measure 16 has a comma above the staff. Dynamics include *p*.

22

Cl.

Pno.

mp

mf

Measures 22-27. Clarinet (Cl.) and Piano (Pno.) parts. Measure 22 has a comma above the staff. Dynamics include *mp* and *mf*.

28

Cl.

mf *f*

Pno.

mp *mf*

A tempo

34

Cl.

mf

Pno.

mp

A tempo

40

Cl.

mp

Pno.

45

Cl.

Pno.

p

45 46 47 48

49

Cl.

Pno.

rit.

p

rit.

49 50 51 52

Clarinet in B \flat

Tree House

R Hardman

Allegretto

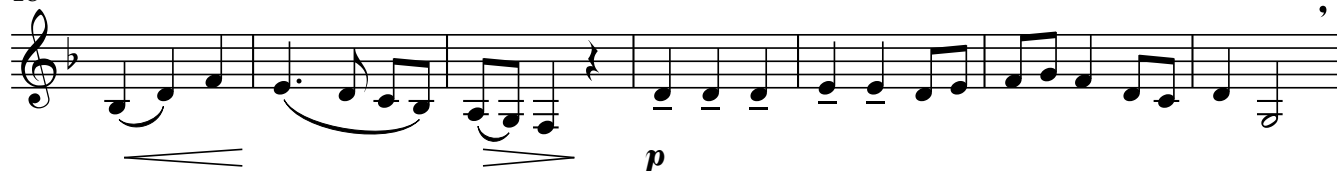
3



10



18



25



31



37

A tempo



45

rit.



Piano

Tree House

R Hardman

Allegretto

Measures 1-6 of the piece. The music is in 3/4 time with a key signature of three flats (B-flat, E-flat, A-flat). The first system starts with a mezzo-forte (*mf*) dynamic. The melody in the right hand consists of eighth and quarter notes, while the left hand provides a simple harmonic accompaniment. A crescendo hairpin is shown over measures 5 and 6, leading to a mezzo-piano (*mp*) dynamic at the start of measure 7.

Measures 7-11. The melody continues with eighth notes in the right hand. The left hand has whole notes. A decrescendo hairpin is shown over measures 10 and 11, leading to a piano (*p*) dynamic at the start of measure 12.

Measures 12-16. The melody continues with eighth notes in the right hand. The left hand has whole notes. The dynamic remains piano (*p*).

Measures 17-21. The melody continues with eighth notes in the right hand. The left hand has whole notes. A decrescendo hairpin is shown over measures 20 and 21, leading to a piano (*p*) dynamic at the start of measure 22.

Measures 22-26. The melody continues with eighth notes in the right hand. The left hand has whole notes. A mezzo-forte (*mf*) dynamic is marked at the start of measure 24.

Measures 27-31. The melody continues with eighth notes in the right hand. The left hand has whole notes. A mezzo-piano (*mp*) dynamic is marked at the start of measure 29.

V.S.

32

mf

Measures 32-36: Treble and bass staves in B-flat major. Measure 32 has a whole rest in the treble and a half note B-flat in the bass. Measures 33-35 feature a melody in the treble with eighth and sixteenth notes, and a bass line with half notes and rests. A crescendo hairpin spans measures 32-35. Measure 36 ends with a repeat sign in the treble and a half note B-flat in the bass.

37

A tempo

mp

Measures 37-41: Treble and bass staves. Measures 37-41 feature a melody in the treble with eighth and sixteenth notes, and a bass line with half notes and rests. A mezzo-forte (mp) dynamic is marked at the start of measure 37.

42

p

Measures 42-46: Treble and bass staves. Measures 42-46 feature a melody in the treble with eighth and sixteenth notes, and a bass line with half notes and rests. A piano (p) dynamic is marked at the start of measure 45.

47

Measures 47-49: Treble and bass staves. Measures 47-49 feature a melody in the treble with eighth and sixteenth notes, and a bass line with half notes and rests.

50

rit.

Measures 50-52: Treble and bass staves. Measures 50-52 feature a melody in the treble with eighth and sixteenth notes, and a bass line with half notes and rests. A ritardando (rit.) dynamic is marked at the start of measure 50. The piece concludes with a double bar line and repeat dots in measure 52.